

# Who Does What?



## Seqwater

Seqwater catches the rain that falls as part of the water cycle, across more than 1.2 million hectares of catchments and rivers. The water eventually flows into 25 dams, 14 bore fields and aquifers.

After collecting this water the next part of the journey involves Seqwater treating the water at 46 water treatment plants, using some of the most advanced water treatment technologies available.

The treated water is then ready to continue its journey via LinkWater pipes and local council water companies to homes and industry.

### Quick Fact

Wivenhoe Dam holds more than 2.5 times the water in Sydney Harbour.

## Linkwater

LinkWater looks after the big pipes that transport drinking water from the treatment plants and then into huge tanks called storage reservoirs. Most pipes are under the ground but some are above. LinkWater's network of bulk water pipelines stretches from the Sunshine Coast all the way down to the Gold Coast and out to Toowoomba.

Pipelines come in many different sizes and are built to last a long time. Many of these pipelines are new but a few are very old and will need to be replaced soon. The oldest pipe in the network was laid in 1892 in Karana Downs. That's 118 years old! It still supplies water to western Ipswich.

The largest pipe in the network is 1.8 metres in diameter. That's big enough for a tall man to stand up in!

### Quick Fact

LinkWater moves about 600 megalitres of water per day through the bulk water pipe network to where it's needed most. This is equal to 300 olympic-sized swimming pools, flushing a toilet 30 million times, 28 billion ice cubes or about 114 years in the shower!

## Watersecure

WaterSecure makes water. But how? At the Gold Coast Desalination Plant, water from the sea is turned into drinking water by a special process called "reverse osmosis", which removes the salt from seawater. The end result is water so pure we have to add minerals back into it! We also add a little bit of chlorine to keep the water clean and a little bit of fluoride to make your teeth strong and healthy, before the water is sent to people on the Gold Coast and in Brisbane.

WaterSecure also makes water at three advanced water treatment plants – two near the mouth of the Brisbane River and one near Ipswich. We take used water and recycle it using reverse osmosis just like in our desalination plant. We also use two other special processes – micro filtration and advanced oxidation – to make sure the water is completely pure. This purified recycled water goes to power stations and when it doesn't rain and our dams get low again it will be put into Lake Wivenhoe so that we will always have enough water to drink. At full speed our plants could recycle enough water every day for more than a million people. By not wasting water and recycling it, like we recycle paper and aluminium cans, we are helping the environment.

### Quick Fact

Recycled water is safe to drink. People in London, Singapore and Los Angeles drink recycled water.

## The SEQ Water Grid Manager

The SEQ Water Grid Manager makes sure the water from the SEQ Water Grid goes to where it is needed most. If people on the Gold Coast are short of water, the SEQ Water Grid Manager will issue Grid Instructions to organise water from Brisbane to be pumped down to the Gold Coast.

Having a connected grid network means water can be moved all around South East Queensland.

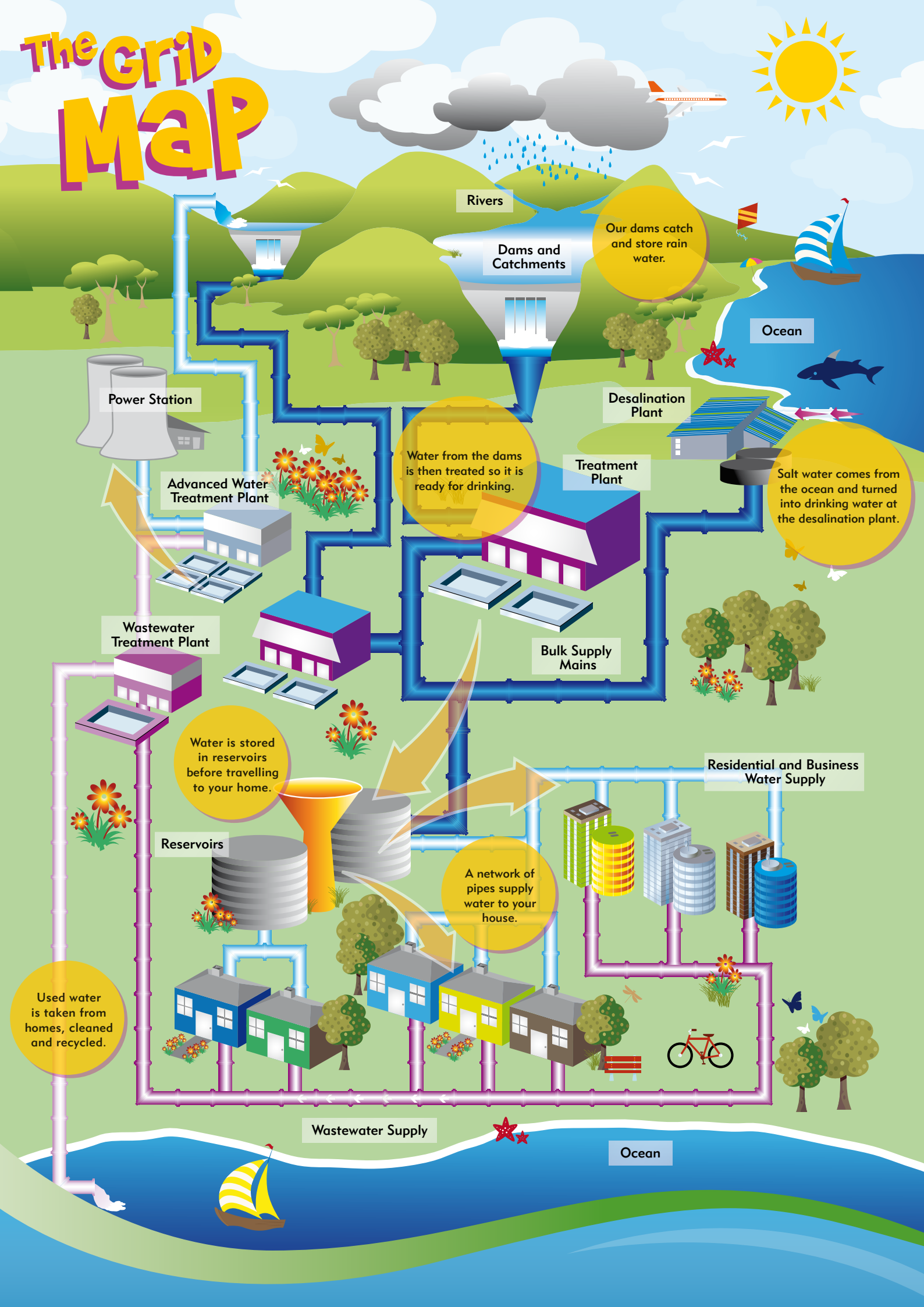
The SEQ Water Grid Manager is also responsible for making sure the water you drink is clean and that there is lots of it so we never run out. To do this, the SEQ Water Grid Manager buys the water from the dams, the desalination plant and the advanced water treatment plants and sells it to council businesses and industrial customers. Council businesses then deliver the water to your home – ready for the next time you turn on the tap!

safe

secure

sustainable

# The Grid Map



Rivers

Dams and Catchments

Our dams catch and store rain water.

Ocean

Power Station

Advanced Water Treatment Plant

Water from the dams is then treated so it is ready for drinking.

Treatment Plant

Desalination Plant

Salt water comes from the ocean and turned into drinking water at the desalination plant.

Wastewater Treatment Plant

Bulk Supply Mains

Water is stored in reservoirs before travelling to your home.

Reservoirs

Residential and Business Water Supply

A network of pipes supply water to your house.

Used water is taken from homes, cleaned and recycled.

Wastewater Supply

Ocean